

## Lifeline® "Oil-Less" Rotary Vane Medical Vacuum Tank Mount Duplex System (3 - 5 HP) with TotalAlert 360 Controls

### SPECIFICATION

#### Single Point Connection (SPC) System Design

The LifeLine® "Oil-Less" Rotary Vane Medical vacuum package is fully compliant with NFPA 99 and features a common base with single point connections for the electrical panel and intake. Each pump and the receiver are connected to a common intake manifold. The system is capable of access through a standard 34.5" doorway. Designed and manufactured with ISO 13485 processes, each system is completely tested before shipment and includes:

- Two "oil-less" rotary vane vacuum pumps with two motors
- Integral pre-wired control panel
- Horizontal air receiver with full-size three-valve bypass system sized for appropriate demand

#### Vacuum Pump

Each pump is a direct driven, oil-less rotary vane vacuum pump that operates completely dry. Each pump is completely aircooled with no water requirements. Each pump contains:

- Self-lubricating carbon/graphite vanes
- Permanently lubricated and sealed bearings
- Equipped with a vacuum relief valve, check valve to prevent backflow through off-cycle units, flexible connector, and isolation valve
- Mounting on vibration isolators

#### Vacuum Pump Drive

Each pump is direct driven. Torque is transmitted from the motor to the pump through a shaft coupling.

#### Vacuum Pump Motor

Motors are continuous duty, IEC rated, C-face, foot-mounted, TEFC, suitable for 230/460 or 208V, 60 hertz, 3-phase electrical service and 380V, 50 hertz, 3-phase electrical service.

#### Vacuum Filtration per NFPA 99

A HEPA inlet air filter, 0.3 micron, 99.97% efficiency, is mounted before each vacuum pump. A clear, glass collection canister is mounted below each HEPA filter, with quarter turn valve to isolate canister from filter during service. The inlet filter canister contains a bleed valve to relieve vacuum before servicing.

#### Intake Piping

Each vacuum pump has a factory piped intake with integral flex connector, isolation valve, and check valve. Interconnecting piping consists of galvanized pipe and fittings.

#### Vacuum Receiver

The vacuum receiver is ASME Code stamped, and rated for a minimum 150 PSIG design pressure. The receiver has a full-size three-valve bypass system to allow for draining of the receiver without interrupting the vacuum service. A manual drain is provided on the receiver.

#### TotalAlert 360 Control System

The duplex mounted and wired TotalAlert 360 control system is U.L. labeled. The control system provides automatic lead/lag sequencing and automatic alternation of vacuum pumps based on first-on/first-off principle with provision for simultaneous operation if required. Automatic activation of reserve unit, if required, will activate an audible alarm as well as a visual alarm on the display screen.

Additional components include:

- NEMA 12 control panel enclosure
- Circuit breaker disconnects for each motor with external operators
- Full voltage motor starters with overload protection
- 24V control circuit
- 65kAIC SCCR rating for control cabinet

The touch screen controls feature a 10" color, high resolution screen. Screen displays and functions include:

- Easy to read system vacuum level
- Status of all units (Running, Available, Off, next to Run)
- Trend graphs for vacuum level and units running
- Run time hour meters for each unit
- Visual/audible alarm indications with isolated contacts for all standard remote alarms
- Event log recording alarms and system activity
- Service alerts
- Event log recording service warnings and service history
- Integral cellular connectivity to MyMedGas, allowing electronic notifications of alarms and warnings
- Daily rounds uploadable to MyMedGas
- BTL listed, BACnet/IP communication

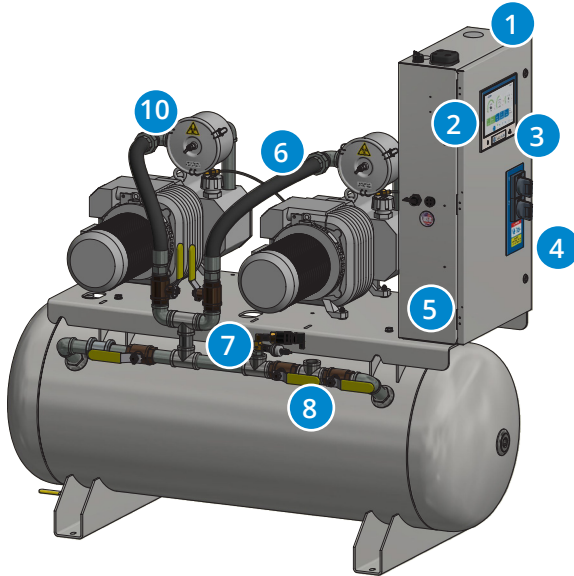
#### Installation

The installation of this vacuum technology is limited to a maximum of 4,000 feet elevation above sea level. For installation of this equipment above 4,000 feet elevation, please contact the factory.



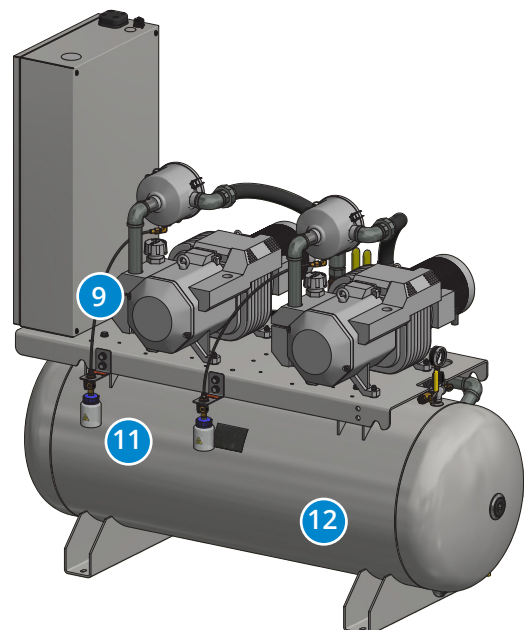
**Standard Configuration**

Model Shown: 5 Hp Duplex

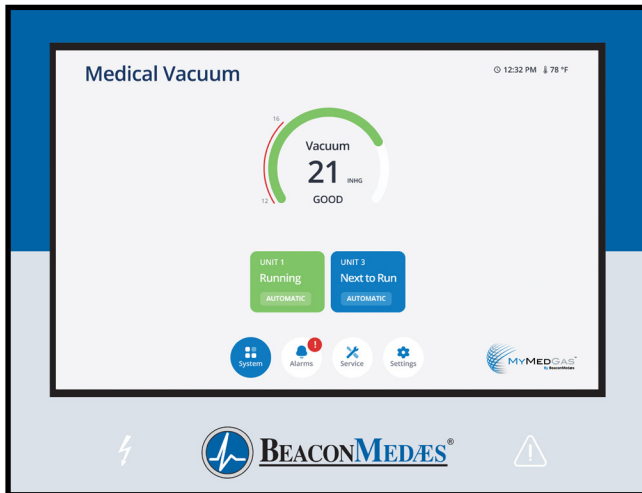


- 1 Control panel pre-drilled for power and alarms for easy electrical installations. Ethernet connection on panel top for easy installation of BACnet connectivity, with additional connection on the side panel for software updates.
- 2 TotalAlert 360 controls featuring 10" color screen with high resolution 1280 x 800 Capacitive Touch Display for exceptional clarity, visibility, and useability.
- 3 LED indication of Reserve in Use condition as backup annunciation to display failure and LED indication of power to the control panel.
- 4 Through the door disconnects for pumps add to safety during service.
- 5 Control cabinet components achieve rating of 65kAIC SCCR.
- 6 Flex connectors on vacuum inlet and discharge to isolate pump vibration from facility pipeline.
- 7 Vacuum switch as backup to vacuum transducer. In case of transducer failure, system operates effectively.

- 8 Full-size 3-valve receiver bypass with flanged valves reduce potential leak points over NPT fittings.
- 9 Ease of access to the pump for servicing vanes.
- 10 Individual HEPA air inlet filter per vacuum pump to prevent contaminants from entering vacuum pump, ensuring safety during servicing. Housing bleed valve to remove vacuum for filter replacement.
- 11 Glass collection canister mounted below HEPA filter, with isolation valve to allow for easy changeout.
- 12 Small size enables ease of transport through doorways.



## TotalAlert 360 Control System



### TotalAlert 360 Touch Screen

- 10" LCD 1280 x 800 Capacitive Touch Display for exceptional clarity and visibility, with enhanced user experience
- LCD is IPS-TFT for enhanced color and contrast, featuring 85% viewing angle in all directions
- Toolbars on all screens with easy access navigation icons that enable full access with minimal touches

### MyMedGas Connectivity

- Cellular connectivity to cloud-based MyMedGas web page for remote operator to view system controls and display information
  - » View remotely system operation details, alarms and event history
  - » View remotely maintenance timers, service history logs
  - » Easily download system trends, event logs and reports for system management and record keeping
- Electronic notification
  - » Allows for remote alerts of alarm and warning conditions
  - » Allows for remote alerts of routine maintenance
- Logging rounds to MyMedGas
  - » Main screen touchpoint for MyMedGas with time stamp to log operating conditions, system parameters during daily rounds
  - » Automated report generated to MyMedGas

### Ethernet Connectivity

- Control panel contains Ethernet port on top of cabinet for easy installation of BACnet
- TCP/IP protocol for BACnet activation
- Ethernet port on side of control cabinet that allows reprogramming with a standard computer for software updates

### Control Cabinet Safety

- Volt free relay contacts for all standard alarms
- Low voltage (24V) control circuit
- Full voltage motor starters with overload protection
- Circuit breaker disconnects for each vacuum pump
- 65kAIC SCCR rating

### Redundancy

- Each vacuum pump has an individual board for control allowing units to function independently
- In unlikely malfunction of display board or display screen, system will function normally and activate alarm
- If master board malfunctions, system goes to failsafe operation with backup vacuum switch
- Independent LED indicators on control screen for Reserve in Use and power to the control panel as backup annunciation to display failure

### Master Display Screen

- Main Screen
  - » Displays the system operating conditions, including system vacuum level
  - » Displays the pump unit sequence, including status of pumps (running, available, off) and next to start
- Trends & Graphs
  - » Shows measured values of the system operating conditions over a period of time (operating vacuum, ambient temperature)
  - » Shows unit usage and operation, clearly identifying each unit and its running status
  - » Selectable time periods consist of 60 minutes, 4 hours, 24 hours, and 6 days
  - » Visually precise with green and red shading for normal and non-normal areas
- Service
  - » Displays ambient temperature in the room
  - » Maintenance screen shows suggested and required maintenance items with resettable timers
  - » Historical event log records all service activities
  - » Link to operations manuals associated with system
- Alarms and Shutdowns
  - » All system/unit Alarms and Shutdowns displayed with visual indication (Green or Red) and unit operation status, allowing for quick identification and evaluation of system operation
  - » Custom messaging for each alarm and shutdown
  - » Testing mode enables operator to test all alarm/shutdown events (password protected), with all test events recorded in the event log
  - » Event History Log records all system event history
- Unit Operation
  - » Screens shows the operation mode of the unit along with automatic or manual mode setting
  - » Unit status screen displays the running hour meter values, including average daily run time and average starts/hour
  - » Pump rotation allows the unit to run for a short period to check pump rotation
- System Settings
  - » Allows the adjustment of system pressure operating range
  - » Displays pertinent system model information

**SPECIFICATION TABLE**

Vacuum System Specifications <sup>1</sup>										
System Model No.	HP	Capacity <sup>2</sup> @19" Hg (scfm)		System <sup>3</sup> BTU/Hr	Receiver (gallons)	Noise <sup>4</sup> Level	System FLA			System Weight (lbs)
		Pump	System				208V	230V	460V	
<b>Tankmount Duplex - 60 Hz</b>										
VDT03D-120H-D	3	13	13	6,108	120	70	21.0	20.1	10.2	958
VDT05D-120H-D	5	21	21	10,178	120	76	36.0	34.9	15.8	1,150
<b>Tankmount Duplex - 50 Hz</b>										
							<b>380V</b>			
VDT03D-120H-DE	3	11.2	11.2	6,108	120	70	10.4			958
VDT05D-120H-DE	5	16.7	16.7	10,178	120	76	19.4			1,150

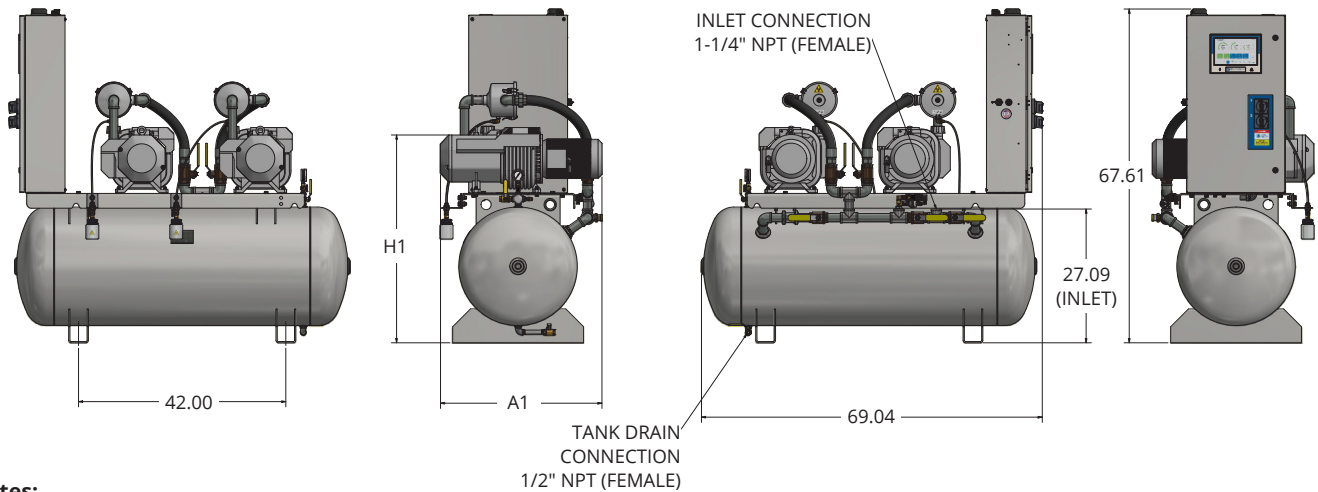
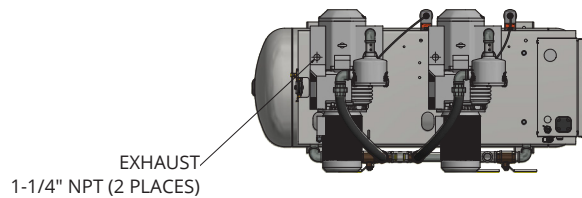
**Specification Table Notes:**

1. Normal operating conditions at a maximum ambient of 105° F. Consult factory for higher ambient conditions.
2. All capacities are shown as NFPA 99 system capacities (reserve vacuum pump on standby).
3. All system BTU/HR are shown with reserve vacuum pump on standby.
4. All noise levels are shown in dB(A) and reflect reserve pump on standby.

**Standard Configuration**

Model Shown: 5 Hp Duplex

System Model No.	HP	Dimensions	
		A1	H1
VDT03D-120H-D	3	27.51	41.94
VDT05D-120H-D	5	28.45	42.1


**Notes:**

- Allow 36 inches in front of control panel for maintenance and ventilation, all other sides require 24 inches of clearance.
- Discharge flex hoses (2) ship loose.
- Additional drawings/diagrams available for download at [www.beaconmedaes.com](http://www.beaconmedaes.com).

*Life is in the details.®*